

# *cookjoys*

**Salad and Fruit Ice Cream maker**

**2 in 1**

**User's Manual**

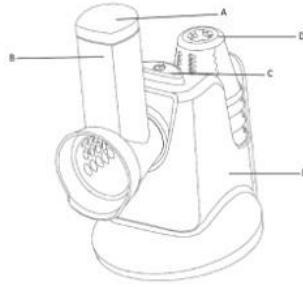


**QCV-326-02**

**150W**

# STRUCTURE

- A. Food Pusher
- B. Feed Tube
- C. ON\OFF Button
- D. Blades
- E. Housing



# ACCESSORIES

## Coarse Grater



Recommend to: carrots, cucumbers, zucchini, potatoes, radishes, peppers, hard cheeses and chocolate.

## Fine Grater



Recommend to: carrots, cucumbers, zucchini, potatoes, radishes, hard cheeses and chocolate.

## Thick Slicer



Recommend to: carrots, zucchini, potatoes, cucumbers, peppers, onions, turnips, red cabbage, white cabbage, apples or hard cheese.

## Fine Slicer



Recommend to: carrots, zucchini, potatoes, cucumbers, peppers, onions, turnips, red cabbage, white cabbage, apples or hard cheese.

## Rough Grinder



Recommend to: dry bread, hazelnut, walnut, almond, parmesan cheese, chocolate, pastries, biscuit

## **INTRODUCTION**

Before using the Salad Maker for the first time, please read carefully and thoroughly the following operating instructions and safety rules. Familiarize yourself completely with the functions of the device. Be careful to keep this manual for later reference and if you should give the device to a third party make sure to give the instruction manual as well.

## **USE AND CARE**

This device is intended exclusively for shredding, slicing and grating normal household foods, such as fruit, vegetables, nuts, chocolate and hard cheeses. It is not intended for commercial use. Any other use or modification to the equipment shall be considered as improper use and could give rise to considerable danger.

- Do not modify the appliance in any way. Unauthorized modification may impair the function and/or safety and could affect the life of the equipment.
- Always check for damaged or worn out parts before use. Broken parts will affect the operation. Replace or repair damaged or worn parts immediately (by a professional).
- Store idle appliance. When the Salad Maker is not in use, store it in a secure place out of the reach of children. Inspect it for good working condition prior to storage and before re-use.

## **IMPORTANT SAFETY RULES**

1. Before connecting the appliance to the mains, check whether the type of supply and the mains voltage corresponds with the appliance.
2. Always switch OFF and pull the plug out of the socket before you clean the appliance or when you have finished using it. To disconnect the device from the electricity supply, never pull the plug out using the power cord, always pull directly on the plug. Never carry the unit by its power cord.
3. Indoor use only. Never immerse the device in water and do not expose the device to rain or moisture. If the device should fall into water, first pull the plug out of the socket and only then remove the device from the water. Afterwards have the unit examined by an authorized service center before you use it again.
4. Do not use the appliance if your hands are wet or if you are standing on a wet floor.
5. The Salad Maker is designed exclusively for domestic use and not for commercial purposes.

6. Set up and store the appliance and its attachments out of reach of children.
7. Do not leave the appliance unattended while it is on.
8. Always ensure that the Salad Maker is safely set up before you start to use it.
9. Avoid contacting moving parts. Do not reach into the feed tube. Always use food pusher to avoid injury.
10. This device is not suitable for chopping extremely hard products, such as nutmeg, coffee beans or cereals.
11. This device is not a meat grinder. It is not suitable for chopping any kind of meat.
12. Keep your hair, clothing and jewelry away from the rotating parts.
13. Check unit and its components regularly for damages. Do not use the appliance if it is damaged in any way. Have it immediately repaired at an authorized service center. Do not ever try to repair the unit yourself. There is danger of electrical shock.
14. If the supply cord is damaged, it must be replaced by the manufacturer, its service agent or similarly qualified persons in order to avoid injury.
15. Use the Salad Maker with the supplied accessories only.
16. No claims under the warranty or liability for damages will be accepted if they result from improper or incorrect use of the Salad Maker.
17. Switch off and unplug the device before removing or inserting the attachments.

**CAUTION!** Handle the attachments with care. Hold the attachments from plastic ends when manipulating.

**WARNING!** To reduce the risk of injury, be sure to insert or remove blade cones by holding its plastic edges. Use caution when removing cones and when cleaning.

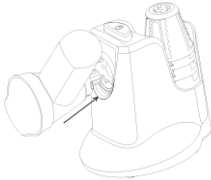
18. Do not try to open the housing yourself. Do not introduce any kind of objects into the housing.
19. This appliance can be used by children aged from 8 years above and persons with reduced physical , sensory or mental capabilities or lack of experience and knowledge if they have been given supervision or instruction concerning use of the appliance in a safe way and maintenance shall not be made by children without supervision.
20. This appliance shall not be used by children. Keep the appliance and its cord out of reach of the children.

## BEFORE FIRST USE

Take the Salad Maker carefully out of its packaging. Remove all the packaging material. Keep children and animals away from packaging materials. There is danger of suffocation!

Clean the attachments, food pusher and feed tube before it comes into contact with any food (refer to the CLEANING section).

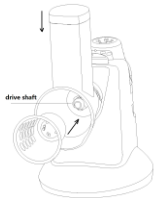
## INSERTING



1. Hold the feed tube, slightly insert it into the housing.



2. Rotate a quarter turn to the left until it engages with the housing.



3. Select a suitable attachment (see Accessories section). Hold plastic edges and insert the attachment into the food tube. Turn the blade cone clockwise. Make sure that it is placed correctly on the drive shaft.

Put the food pusher into food tube.

## REMOVING

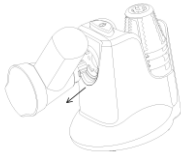


1. Hold plastic edges of the blade cone, turn it counterclockwise. Remove the blade cone out of food tube.

Take out the food pusher from food tube.



2. Turn food tube clockwise.



3. Remove food tube from housing.

## SETTING UP THE DEVICE

1. Never set the device up on a hot surface or near an open flame.
2. Make sure that the cord does not pass over hot or sharp edged objects.
3. Do not allow the mains lead to become kinked or trapped. The cable should be laid such that there will not be any risk of anyone pulling it inadvertently or tripping over it.
4. Set up the Salad Maker on a flat, non-slip surface close to an electrical socket.
5. Connect the device to an earthed socket.

## USING THE DEVICE

**WARNING:** Never touch the attachment when it is operating or plugged into an outlet!

- To safeguard your fingers always use the food pusher. Never put hand, or utensils into feed tube or into rotating attachment.
- Use the Salad Maker only for slicing and grating normal household foods, such as fruit, vegetables, nuts, chocolate and hard cheeses.
- Never use the appliance for more than 3 minutes continuously.
- Do not operate too long without food.
- We recommend that you chop your food into small pieces before placing them into the feed tube. This will make it easier to push down the feed tube.



1. Place a bowl under the opening of the attachment.
2. Press the ON\OFF Switch briefly one or two times before placing food into feed tube, to ensure that the attachment locks into drive shaft and it is securely in place.
3. Switch on the device by holding down ON\OFF switch.
4. Place the cut food into the feed tube.
5. Gently press down with the food pusher.
6. Let go of the ON\OFF switch once finished.
7. Unplug and remove the attachment (follow cleaning instructions).



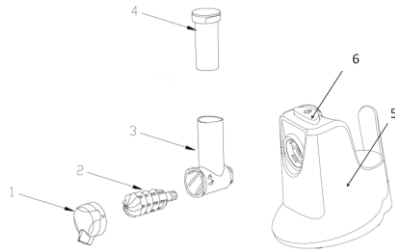
## CLEANING

- It is necessary to clean the Salad Maker after every use as perishable food scraps could accumulate.
  - Do not immerse the device in water.
  - Do not use sharp or abrasive cleaning tools.
  - CAUTION! Danger of injury: the attachments are sharp!
1. Before starting to clean the device, switch it off, unplug from the socket.
  2. Remove the attachment, the food pusher and the feed tube and clean in warm water and mild dish soap. (also dishwasher safe)
  3. Clean the housing with a damp cloth and dry with a soft cloth.

# Fruit Ice Cream Maker

## STRUCTURE

1. Dispenser
2. Grinder
3. Chute
4. Plunger
5. motor housing
6. ON\OFF Switch



## INTRODUCTION

Before using the device for the first time, please read carefully and thoroughly the following operating instructions and safety rules. Familiarize yourself completely with the functions of the device. Be careful to keep this manual for later reference and if you should give the device to a third party make sure to give the instruction manual as well.

## IMPORTANT SAFETY RULES

1. Before connecting the appliance to the mains, check whether the type of supply and the mains voltage corresponds with the appliance.
2. Always pull the plug out of the socket before you clean the appliance or when you have finished using it. To disconnect the device from the electricity supply, never pull the plug out using the power cord, always pull directly on the plug. Never carry the unit by its power cord.
3. Indoor use only. Never immerse the device in water and do not expose the device to rain or moisture. If the device should fall into water, first pull the plug out of the socket and only then remove the device from the water. Afterwards have the unit examined by an authorized service center before you use it again.
4. Do not use the appliance if your hands are wet or if you are standing on a wet floor.
5. Set up and store the appliance and its attachments out of reach of children.
6. Do not leave the appliance unattended while it is on.
7. Always ensure that the device is safely set up before you start to use it.
8. Do not reach into the feed tube. Always use food pusher to avoid injury.
9. This device is not suitable for ice blocks crushing and extremely hard products.



10. Keep your hair, clothing and jewelry away from the rotating parts.
11. Check unit and its components regularly for damages. Do not use the appliance if it is damaged in any way. Have it immediately repaired at an authorized service center. Do not ever try to repair the unit yourself. There is danger of electrical shock.
12. If the supply cord is damaged, it must be replaced by the manufacturer, its service agent or similarly qualified persons in order to avoid injury.
13. No claims under the warranty or liability for damages will be accepted if they result from improper or incorrect use .
14. Switch off and unplug the device before removing or inserting the chute assembly.  
CAUTION! Handle the assembly with care.
15. Do not try to open the housing yourself. Do not introduce any kind of objects into the housing.
16. Do not operate the unit continuously for more than 7 minutes. Allow the unit to cool completely before using again.
17. The manufacturer does not recommend the use of other accessory attachments. Use of other accessory attachments may cause injuries.
18. Make sure the Chute, Grinder and Dispenser are securely locked in place before operating.
19. Position the appliance as close to the outlet as possible to prevent injury due to tripping over cord.
20. Do not place on or near a hot gas or electric burner, nor in a heated oven.
21. A short power supply cord is provided to reduce the risk resulting from becoming entangled or tripping over a long cord.
22. Longer detachable power-supply cord or extension cord are available and may be used if care is exercised in their use. Exception: An extension cord or longer detachable cord is not recommended for use with this appliance.
23. Appliances can be used by persons with reduced physical, sensory or mental capabilities or lack of experience and knowledge if they have been given supervision or instruction concerning use of the appliance in a safe way and if they understand the hazards involved.
24. Children shall not play with the appliance.
25. If a long detachable power-supply cord or extension cord is used: 1)  
The market electrical rating of the cord or extension cord should be at least as great as the electrical rating of the appliance; 2)If the appliance is of the grounded type, the

extension cord should be a grounding 3-wire cord; and 3)The longer cord should be arranged so that it does not drape over the counter top or table top where it can be pulled on by children or tripped over unintentionally.

26. Do not let cord hang over edge of table or counter or touch hot surface.

27. Never set the device up on a hot surface or near an open flame.

28. Make sure that the cord does not pass over hot or sharp edged objects.

29. Do not allow the mains lead to become kinked or trapped. The cable Should be laid such that there will not be any risk of anyone pulling it inadvertently or tripping over it.

30. Set up the device on a flat, non-slip surface close to an electrical socket.

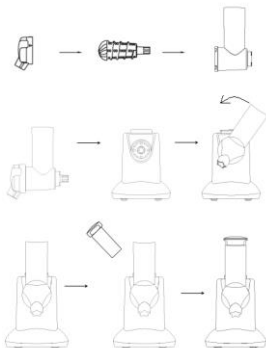
31. Connect the device to an earthed socket.

## BEFORE FIRST USE

Take the device carefully out of its packaging. Remove all the packaging material.

Keep children and animals away from packaging materials. There is danger of suffocation! Clean the chute, dispenser, grinder and plunger before it comes into contact with any food (refer to the CLEANING section).

## INSERTING

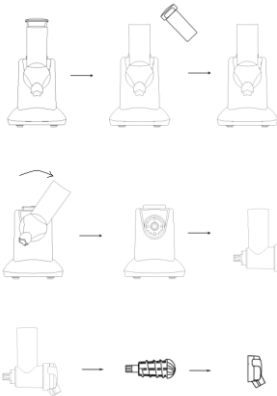


1. Insert the grinder into the chute. Be sure the gasket is properly placed inside the dispenser. Then affix the dispenser to the chute by placing on the front and turning counterclockwise to lock.

2. Insert the tip of the grinder into the housing. Turn counterclockwise to lock the chute assembly in place.

3. Insert the plunger into the chute.

## REMOVING



1. Switch off and unplug the device, then take out the plunger from the chute.

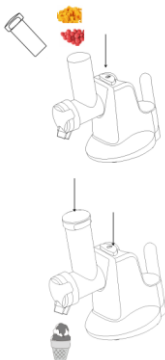
2. Remove the chute assembly by turning clockwise from the housing.

3. Remove dispenser from chute assembly by turning clockwise. Then take out the grinder from the chute.

## USE AND CARE

This device is intended household use and exclusively to process frozen fruit to get nature fruit ice cream, such as banana, mango, kiwi fruit, peach, apple, strawberry, pineapple and cantaloupe etc., not intended for commercial use. Any other use or modification to the equipment shall be considered as improper use and could give rise to considerable danger.

- Do not modify the appliance in any way. Unauthorized modification may impair the function and/or safety and could affect the life of the equipment.
- Always check for damaged or worn out parts before use. Broken parts will affect the operation. Replace or repair damaged or worn parts immediately (by a professional).
- Store idle appliance. When it is not in use, store it in a secure place out of the reach of children. Inspect it for good working condition prior to storage and before re-use.



1. Prepare fruits, freeze it for 5-12 hours

2. Remove the fruit from the freezer 10-15 minutes ahead of time.

3. Press the ON\OFF Switch briefly one or two times before placing food into chute, to ensure that the chute assembly connect with the housing in place.


4. Place serving bowl at the base of the dispenser. Insert the fruit in chute and press to extract frozen dessert.

## CLEANING

- It is necessary to clean the device attachments (chute, plunger, grinder, dispenser and tray) completely after every use as perishable food could accumulate.
  - Do not wash and immerse the housing in water.
  - Do not use sharp or abrasive cleaning tools.
- **CAUTION!**
1. Before starting to clean the device, switch it off, unplug from the socket.
  2. Remove the attachment, the chute, plunger, grinder, dispenser and tray and completely clean in warm water and mild dish soap.
  3. Wipe and clean the housing with a damp cloth and dry with a soft cloth.
  4. To prolong the life for your FRUIT DESSERT MAKER, hand-washing parts is advised.
  5. Dishwasher use is not recommended. Never place the Base in a dishwasher.

## NOTES ON DISPOSAL

Please do not dispose the device with domestic waste. Take the appliance to an appropriate disposal / recycling site - and help protect our environment.

Correct Disposal of this product	
	<p>This marking indicates that this product should not be disposed with other household wastes throughout the EU. To prevent possible harm to the environment or human health from uncontrolled waste disposal, recycle it responsibly to promote the sustainable reuse of material resources. To return your used device, please use the return and collection systems or contact the retailer where the product was purchased. They can take this product for environmental safe recycling.</p>

## GUARANTEE & CUSTOMER SERVICE

Before delivery our devices are subjected to rigorous quality control. If despite all care, damage has occurred during production or transportation, please return the device to your retailer. 1 YEAR GUARANTEE is provided from the day of purchase. During this period we will remedy all manufacturing or material defects, by repair or exchange. Defects that arise from improper use and handling, malfunctions due to intervention or repairs by a third party are not covered by this guarantee.