

# USER MANUAL

## QS BELT

---

The QS BELT is an personal inflatable rescue belt that is an excellent alternative when a life vest is not an option. The belt automatically inflates when it comes in contact with water. It can also be inflated by pulling the chord which triggers the CO2 cylinder to inflate the belt. The QS BELT is easily reloaded after use with a with a new CO2 cylinder and is ready to be used again in a few minutes. Open the belt buckle and you have a 160 cm long

extended arm which you can use to pull up someone on the boat, bridge or from an ice wake. The QS BELT has enough buoyancy to keep a full grown man secured on the surface and is your perfect safety companion for water sports, ice skating, skiing or if you want to bring a small and lightweight personal flotation device on your vacation.

## QS BELT

---

Made of strong and durable yellow 380  $\mu$  nylon which is protected by a black cover the QS BELT is only visible when it needs to be. The black cover opens up and exposes the easy-to-spot tube when activated. It is both lightweight and durable and has a lifting capacity of 50 newton. One Size +40 kg.  
Air temp:  $-5^{\circ}\text{C}$  til  $+30^{\circ}\text{C}$   
Water temp:  $-1^{\circ}\text{C}$  og  $+30^{\circ}\text{C}$   
Made in Sweden.



**EN ISO 12402-6 Special Purpose Device Approved  
by Force Tecnology, Denmark**

# USER MANUAL

The Inflatable rescue belt has an inflation valve either automatic or manual.

To operate the manual valve you simply pull the toggle on the side of the lifebelt downwards with a jerk and the bladder will start to inflate immediately.

The automatic lifebelt will operate and inflate once it has been immersed in water for three seconds.

The automatic can be operated manually and both types can be inflated orally by the red oral tube. The oral tube is also used to deflate the lifebelt. When use of automatic inflation you do not need to do anything.

Inflation starts automatic for about three seconds in the water and will be blown up.

The belt also has a manual inflator backup and a mouth valve you use if you want to blow up the belt by mouth.

All products are deflated by the mouth valve.

The propellant in our cartridges is harmless carbon dioxide of food quality.

Note: After lifejacket been inflated it must be recharged.

In purchasing manual is marking which rearming kit to use.

**Every time you wear your inflatable lifejacket you should check the following:**

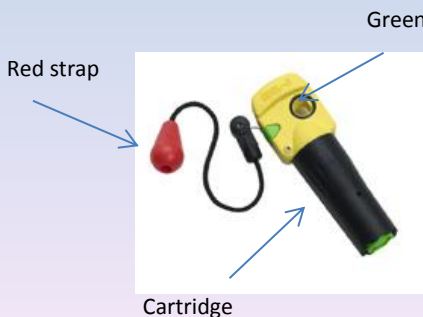
## 1. Check the CO2 cylinder

Unscrew the CO2 cylinder anti clockwise and make sure it is not pierced. Screw the unpierced CO2 cylinder back tightly by hand clockwise. A pierced CO2 cylinder is empty and must be replaced.

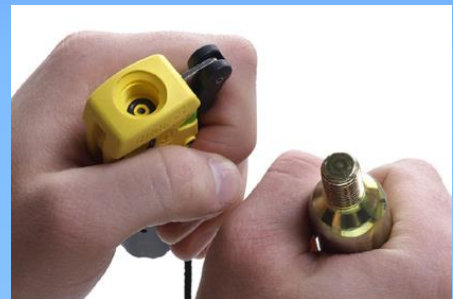
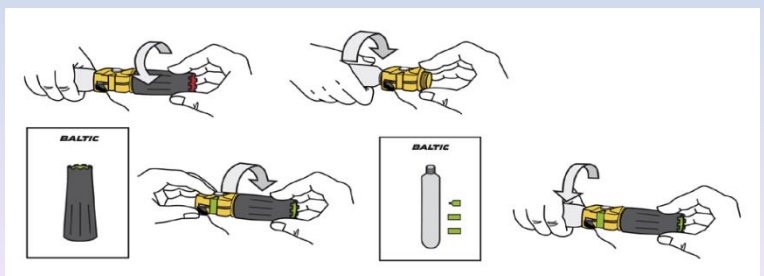
## 2. Check the safety indicators and cartridge/bobbin

### Automatic version:

1. Check both safety indicators.
2. If either of the green indicators is missing and/or the CO2 cylinder is pierced the lifejacket must be rearmed.
3. Carefully follow the Instructions on the next page or the instructions enclosed with our rearming kits.
4. Check that the cartridge/bobbin is in date.



Green safety pins



### Manual version:

1. Check the safety indicator.
2. If the CO2 cylinder is empty or missing it must be replaced.
3. Carefully follow the instructions enclosed with our rearming kits.
4. Check that the manual inflation pull knob is accessible when donned.

# USER MANUAL

If your lifebelt has inflated automatically you have to replace the CO<sup>2</sup> cylinder and the automatic cartridge.

Unscrew the CO<sup>2</sup> cylinders and cartridge.

Check that there is a green security clip over the manual lever, attach a new one if this is missing.

Mount a new cartridge, make sure it has a green safety pin on the bottom and the date on the cartridge is not expired.

Mount a new CO<sup>2</sup> cylinder, check that it is not pierced before screwing it on.

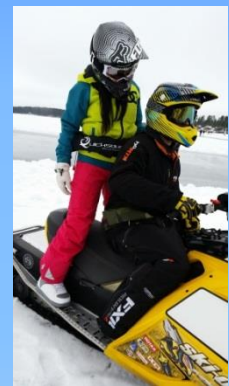
Use only hand force when assembling the parts.

1. On the red mouth valve there is a black cap, lift the cap and invert so that the top is pressed against the green hole in the red tube.
2. Hold and press until all air is out and the yellow tube is fully deflated.

## Important:

The Belt shall be on the front/stomach and the buckles shall be on the backside!

Adjust to fit properly!



## Annual Self Inspection

Inflatable lifejackets demand regular inspections whether or not they have been used. Failure to carry out inspections may cause your lifebelt to malfunction. For further information please visit our web-site [www.qsaverescue.com](http://www.qsaverescue.com).

To be used in sheltered waters with help and rescue close at hand.



After checking that the new CO<sub>2</sub> cylinder and cartridge replaced fold the holster with the inside tube facing inwards and the yellow side is outward so that the release mechanism is visible.



The holster is folded over the orange hose, fasten all Velcro together.



Make sure that the red string hangs freely outside the black holster so you can pull it in case of manual emergency. Check to make sure the CO<sub>2</sub> cylinder is new and non-perforated, and that cartridges date is not expired.

# ACCESSORIES

## QS BELT



CO2 CYLINDER-PACK



CARTRIDGE

Automatic valve cartridge



INDICATOR PIN

Green visual indicator

### CONTROL OF United Moulders

**cartridge:** On the cartridge is printed the expiry date. E.G. **0418**, this would denote replace by April 2018.